

Gas regulator with valve

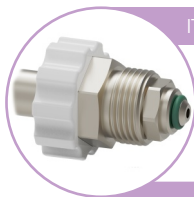


JUST PRESS B gas regulators are specially designed for its use in home oxygen therapy services or in hospital facilities with no oxygen piped network available.

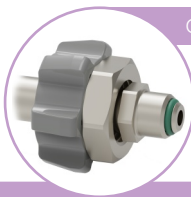


Just Press B Features

- Piston gas regulators for its use on oxygen cylinders at 200 bar with a Spanish standard connector (*please consult our staff about other gases*).
- They incorporate a side gas outlet (*please see "Just Plug: Connectors and valves family" to consult the standards available*).
- They incorporate a double scale manometer (bar/psi) and color code, to read the pressure of the cylinder.



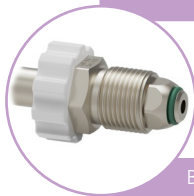
ITC EP-6



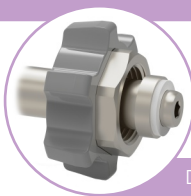
CGA V-1



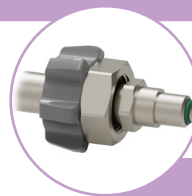
Pin-Index



BS 341-3



DIN 477-1



NF E29-116

INLET CONNECTION STANDARDS

(Consult our staff about other standards)

TECHNICAL SPECIFICATIONS

Materials:	Anodized Aluminium, Polycarbonate, ABS, Polyamide, Stainless steel and chromed brass
Precision:	± 10 %
Maximum supply pressure:	200 ba
Outlet standard:	DIN 13260, NF S 90-116, BS 5682, SS 8752430, ISO 18082 (NIST), CGA V-5 (DISS), etc...
Inlet standard:	ITC EP-6, BS-341, DIN 477, ISO 5145, CGA V-1, NF E29-650, etc...
Point of design:	4,5 ± 0,5 bar
Calibration:	101,3 kPa and 23 °C
Dimensions:	Ø40 x 140 mm
Weight:	625 grs
Standards:	In compliance with Directive 93/42/EEC In compliance with UNE-EN ISO 10524 In compliance with UNE-EN ISO 15002
Classification:	Class IIb

Vertical manometer optionally

